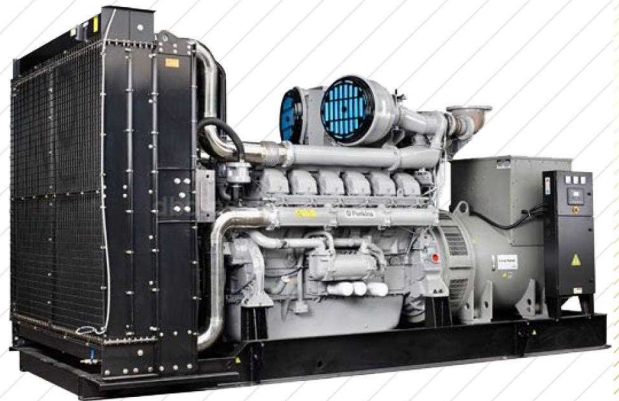


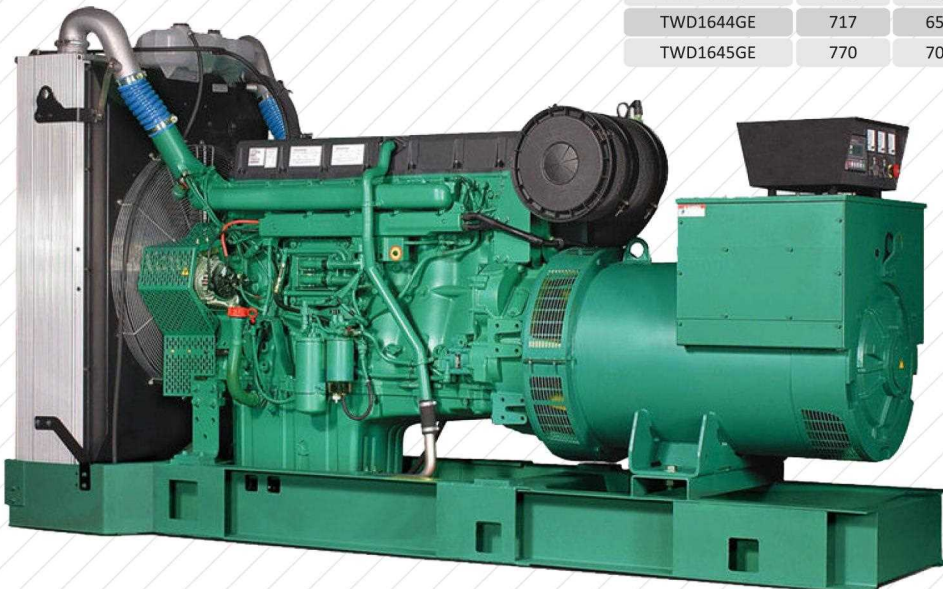
ENGINE MODEL	POWER COSΦ:0.8 KVA		POWER KW		alternator	
	Standby	Prime	Standby	Prime	Stamford	Leroy-Somer
1104C-44TAG2	110	100	88	80	UCI274C	TAL-044D
1106A-70TG1	150	135	120	108	UCI274E	TAL-044H
1106A-70TAG2	165	150	132	120	UCI274F	TAL-044J
1106A-70TAG3	200	180	160	144	UCI274H	TAL-044L
1106A-70TAG4	220	200	176	160	UCI274H	TAL-044M
1206A-E70TTAG2	250	230	200	180	UCDI274K	TAL-046C
1206A-E70TTAG3	275	250	220	200	UCDI274K	TAL-046D
1506A-E88TAG4	300	275	240	220	HCI444D	TAL-046E
1706A-E93TAG1	330	300	264	240	HCI444D	TAL-046F
1706A-E13TAG2	400	350	320	280	HCI444E	TAL-046H
2206A-E13TAG3	450	400	360	320	HCI444F	TAL-047A
2506A-E15TAG1	500	450	400	364	HCI544C	TAL-047B
2506A-E15TAG2	550	500	440	400	HCI544D	TAL-047C
2806A-E18TAG1	660	600	528	480	HCI544E	TAL-047E
2806A-E18TAG2	715	650	572	520	HCI544F	TAL-047F
2806A-E18TTAG4	770	700	616	560	S6L1D-C4	TAL-049B
2806A-E18TTAG5	825	750	660	600	HCI634G	TAL-049C
4006-23TAG3A	900	800	718	641	HCI634G	TAL-049C
4008TAG1A	1000	900	800	720	HCI634H	TAL-049D
4008TAG2A	1100	1000	900	818	HCI634J	TAL-049E
4008-30TAG3	1250	1125	1000	900	HCI634K	LSA 50.2 M6
4012-46TWG2A	1385	1250	1108	1000	PI734B	LSA 50.2 L7
4012-46TWG3A	1500	1350	1200	1092	PI734B	LSA 50.2 L7
4012-46TAG2A	1650	1500	1325	1204	PI734C	LSA 50.2 L8
4012-46TAG3A	1875	1720	1504	1368	PI734E	LSA 52.3 S5
4016-61TRG1	2000	1840	1600	1480	PI734E	LSA 52.3 S5
4016-61TRG2	2250	2000	1800	1600	PI734F	LSA 52.3 S6
4016-61TRG3	2500	2250	2000	1800	PI734H	LSA 52.3 L9

# Perkins



ENGINE MODEL	POWER COSΦ:0.8 KVA		POWER KW		alternator	
	Standby	Prime	Standby	Prime	Stamford	Leroy-Somer
TAD531GE	110	100	88	80	UCI274C	TAL-044D
TAD532GE	145	130	116	104	UCI274E	TAL-044H
Tad731GE	167	152	133	121	UCI274F	TAL-044J
TAD732GE	200	180	160	144	UCI274H	TAL-044L
TAD733GE	224	201	179	161	UCI274H	TAL-044L
TAD734GE	275	250	220	200	UCDI274K	TAL-046D
TAD1341GE	330	300	302	275	HCI444D	TAL-046F
TAD1342GE	385	350	308	280	HCI444E	TAL-046H
TAD1344GE	450	400	356	325	HCI444F	TAL-047A
TAD1345GE	500	450	400	360	HCI544C	TAL-047B
TAD1641GE	550	500	440	400	HCI544D	TAL-047C
TAD1642GE	660	600	554	503	HCI544E	TAL-047E
TWD1643GE	700	630	560	512	HCI544F	TAL-047F
TWD1644GE	717	652	572	521	HCI544F	TAL-047F
TWD1645GE	770	700	616	560	S6L1D-C4	TAL-049B

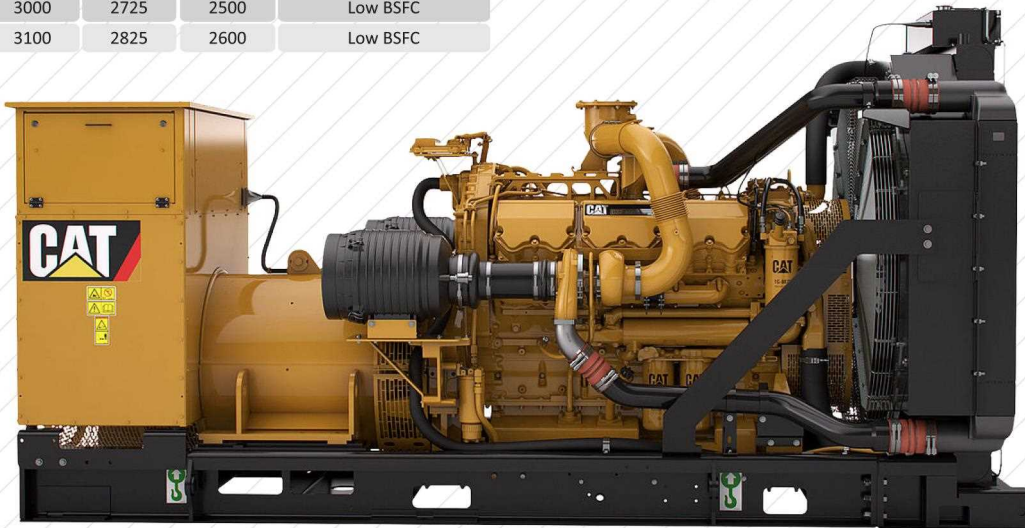
# Volvo



ENGINE MODEL	KVA			Configuration
	Standby	Prime	Continuous	
3406C	300	275	—	Low BSFC
3406C	350	320	—	Low BSFC
3406C	400	365	—	Low BSFC
C15 ACERT	400	365	—	EU Stage II, Low BSFC
C15 ACERT	400	410	—	EU Stage II, Low BSFC
C15 ACERT	450	455	—	EU Stage II, Low BSFC
C15 ACERT	500	500	—	EU Stage II, Low BSFC
C18 ACERT	550	545	—	Low BSFC
C18 ACERT	600	550	—	EU Stage II
C18 ACERT	605	591	—	EU Stage II, Low BSFC
C18 ACERT	650	635	—	Low BSFC
3412C	700	680	—	Low BSFC
3412C	750	725	—	Low BSFC
3412C	800	810	—	Low BSFC
C32 ACERT	900	1000	910	Low BSFC, Low Emissions
3512	1100	1150	1000	Low BSFC
3512	1250	1275	1206	Low BSFC
3512B	1400	1360	1320	Low BSFC, Low Emissions
3512B	1500	1450	—	Low BSFC, Low Emissions
3512B	1600	1500	—	Low BSFC, Low Emissions
3512B-HD	1600	1600	1500	Low BSFC, Low Emissions
3512B-HD	1750	1700	—	Low BSFC, Low Emissions
3516	1875	1825	1600	Low BSFC
3516B	2000	2000	1750	Low BSFC, Low Emissions
3516B-HD	2250	2275	2000	Low BSFC, Low Emissions
C175-16	3000	2725	2500	Low BSFC
C175-16	3100	2825	2600	Low BSFC



# Caterpillar



# Cummins



ENGINE MODEL	POWER COSΦ:0.8 KVA		POWER KW		alternator	
	Standby	Prime	Standby	Prime	Stamford	Leroy-Somer
6BTA5.9G5	110	100	88	80	UCI274C	TAL-044D
6BTA5.9G6	150	136	120	108	UCI274E	TAL-044H
6BTA5.9G7	170	155	136	124	UCI274F	TAL-044J
QSB7G5	220	200	176	160	UCI274H	TAL-044M
6LTA9.5G3	300	270	240	217	HCI444D	TAL-046E
QSL9-G5	330	300	275	250	HCI444D	TAL-046F
6LTA9.5G1	350	320	280	256	HCI444D	TAL-046F
QSG12G2	450	410	360	328	HCI444F	TAL-047A
QSX15G8	550	500	440	400	HCI544D	TAL-047C
VTA28G5	700	630	560	509	HCI544F	TAL-047F
VTA28G6	770	700	616	560	S6L1D-C4	TAL-049B
QSK23g3	880	800	720	648	HCI634G	TAL-049C
QST30G4	1100	1000	880	800	HCI634J	TAL-049E
KTA38G5	1100	1000	880	800	HCI634J	TAL-049E
KTA38G14	1100	1000	880	800	HCI634J	TAL-049E
KTA50G3	1375	1250	1120	1020	PI734B	LSA 50.2M6
KTA50G8	1650	1500	1340	1120	PI734C	LSA 50.2L8
QSK60G4	2200	2000	1800	1636	PI734F	LSA 52.3S6